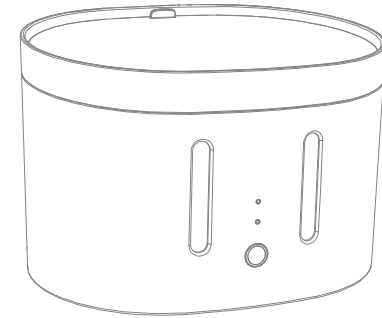


# INSTACHEW User Manual



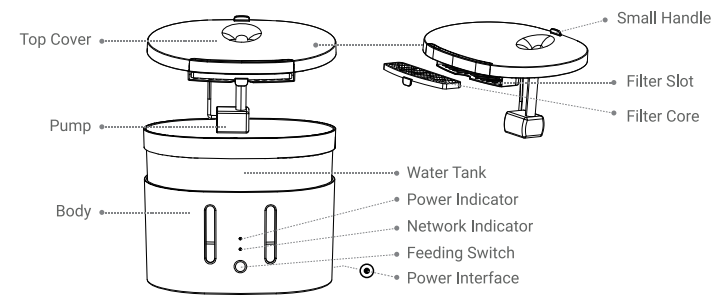
PUREFLOW WATER FOUNTAIN

PET CARE MADE EASY



## Product Introduction

### Product Overview



## Operation Guide

### 1. First Usage

- Please take out pet fountain and accessories
- Please clean inner wall and top cover of water storage bucket and filter core.
- Insert filter core into the filter core slot at the bottom of the top cover after immersing the filter element in clean water for 2 minutes.
- Add water to the transparent water bucket above the MIN line and below the MAX line.
- Take the adapter and plug it into the USB interface at the bottom of the pet fountain.
- Press the button on the front body of the pet fountain to turn on and off the water feeding function, and press the button for approximately 6 to 7 seconds to restore factory default settings, you will notice the light flashing which indicates the network configuration status.

### 2. Connecting

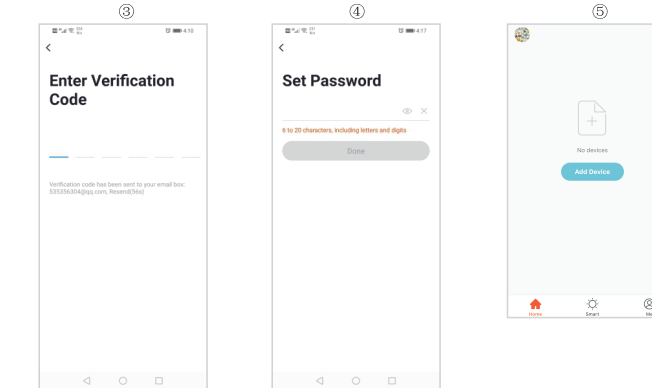
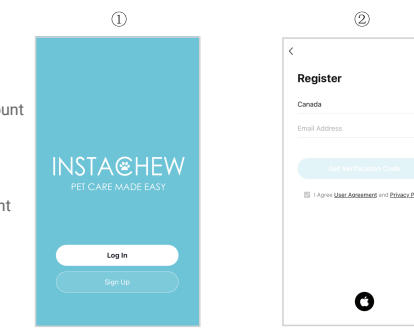
#### 2.1: App Download and Installation

Please scan the QR code below or the QR code on the packaging to download the app and complete the installation.

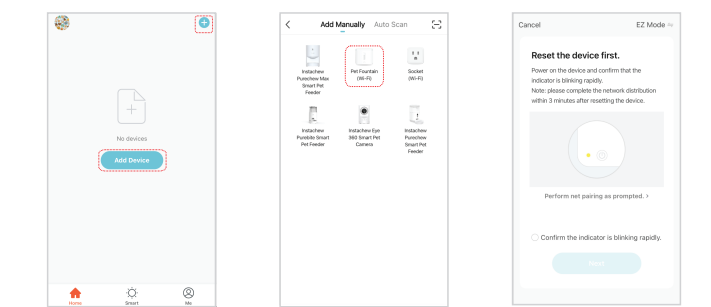


## 2.2: App Registration

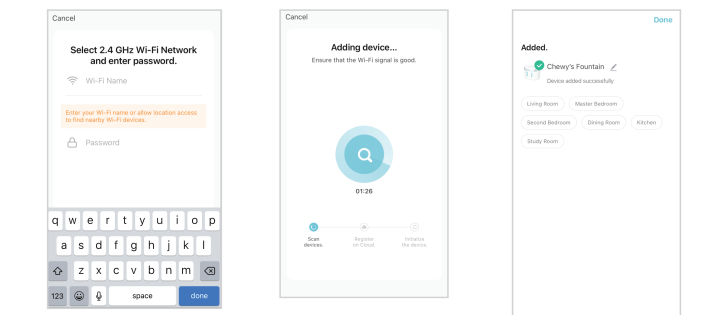
- Open App
- Click "Sign Up" to register account
- After registering email, input received verification code to continue creating your new account
- Set up password
- Login to account successfully



## 2.3: Pet Fountain Configuration

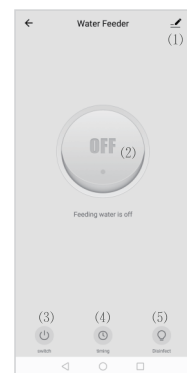


- Login the App to add device
- Click "Pet Fountain"
- Confirm Indicator Rapidly Blink



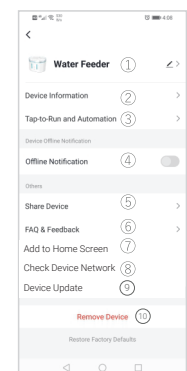
- Enter WiFi Password
- Connecting..
- Device added successfully will appear

## Pet Fountain App: Interface Introduction



### Pet Fountain Interface Introduction

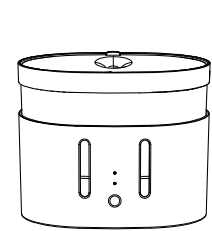
- Setting: other function
- Switch
- Switch
- Timing
- Disinfect/UV



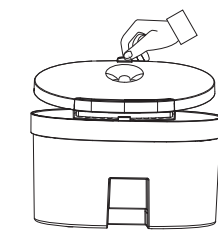
### Settings

- Device Name
- Device Information
- Tap-to-Run and Automation
- Offline Notification
- Share Device
- FAQ & Feedback
- Add to Home Screen
- Check Device Network
- Device Update
- Remove Device

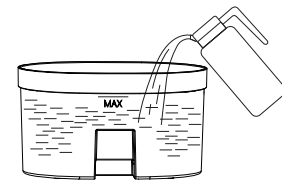
## Adding Water Instructions



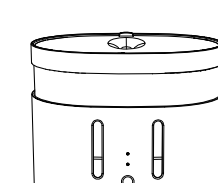
- Turning off power is not necessary. Remove cover.



- Take out water tank.



- Add water up to the MAX level in the water tank.  
**WARNING: HOT WATER FORBIDDEN**

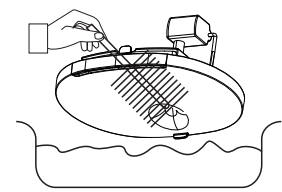


- Place the water tank back and return the cover.

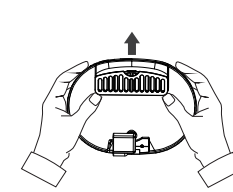
**NOTE:** Set App alarm for lowest water level.

## Cleaning Instructions

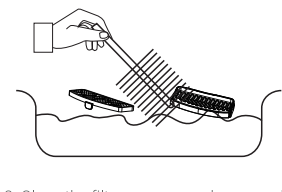
Recommended to clean at least once per week and change water to prevent poor water quality or poor outlet water caused by filtration blockage.



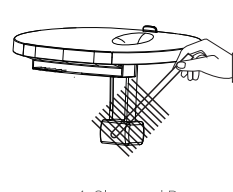
- Remove the water tank cover and clean.



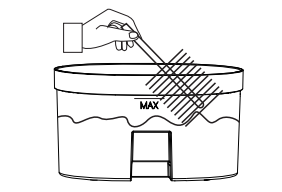
- Remove the filter and groove carefully.



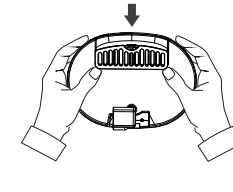
- Clean the filter grooves and remove dirt.



- Clean and Pump.



- Clean inside of the water tank and dry outside.



- When the filter slot is replaced by the top cover, check whether the bayonet is closed.

## Precautions

- Be sure to clean the power after disconnecting the power supply.
- Do not immerse the pet fountain body and power adapter in water.
- For initial usage, clean the inside of the transparent water tank, top cover and the filter slot.
- The filter may be attached with a small amount of powder. This is normal. Rinse filter.
- The filter is recommended to be replaced once a month.

### WARNING:

- Pet fountain and all accessories are not edible.
- Please use pet fountain in a dry indoor environment.
- Do not place pet fountain in a high place.
- Keep the pet fountain horizontal when using it. Do not tilt or tip it.
- Do not add hot water or boiling water in water tank to avoid heat deformation.
- Please make sure that the power cable is blocked and stored to avoid leakage damage caused by pet bites. Ensure the power supply is in safe working voltage, and does not endanger the safety of pets and owners.
- Do not disassemble or repair the pet fountain, otherwise affecting the after-sales.
- Please do not use any accessories that are not provided by the original manufacturer. We are only responsible for the performance and safety of the officially designated accessories.

## FAQ

Q. How often should I change the water and how often should I clean it?

- A. According to the water quality and pet drinking habits, it is recommended to replace or add water every 2-3 days; it is recommended to clean at least once a week (including water tank, top cover, filter slot, filter), and completely change the water to prevent fouling from clogging the filter slot, resulting in abnormal water quality. **NOTE: DO NOT USE HOT OR BOILING WATER WHEN CLEANING DEVICE.**

Q. What kinds of water should be used in the pet fountain?

- A. It is recommended to use pure water or mineral water.

Q. How often does filter need to be replaced?

- A. The filter is recommended to be replaced once a month to maintain a good filter effect.

Q. Does the pet fountain consume lots of power? Is there any noise?

- A. It has a low working power (MAX 4.5W) and consumes about 1kWh in 10 days. The product adopts silent pump and noise reduction design, working without noise. (There is natural water sounds to attract pets to drink plenty of water.)

Q. Is there any safety hazard when the power cable of the device is bitten or chewed by a pet?

- A. The power supply adopts 5V low voltage and 0.6A low current to ensure the safety of pets. Friendly reminder: using broken power cable will have hazards of pets eating, please relace in timely manner.

Q. What are the most suitable pets for pet fountain usage?

- A: It is suitable for adult cats and small/medium dogs.

## Repair Form

Commodity Maintenance Record \_\_\_\_\_

Repair Time \_\_\_\_\_

Repair Failure \_\_\_\_\_

Cause of Issue \_\_\_\_\_

Troubleshooting \_\_\_\_\_

Return Certificate \_\_\_\_\_

Validation Date \_\_\_\_\_

Original Device ID \_\_\_\_\_

New Device ID \_\_\_\_\_

Signature of Maintenance Personnel \_\_\_\_\_

Maintenance Department Stamp \_\_\_\_\_