



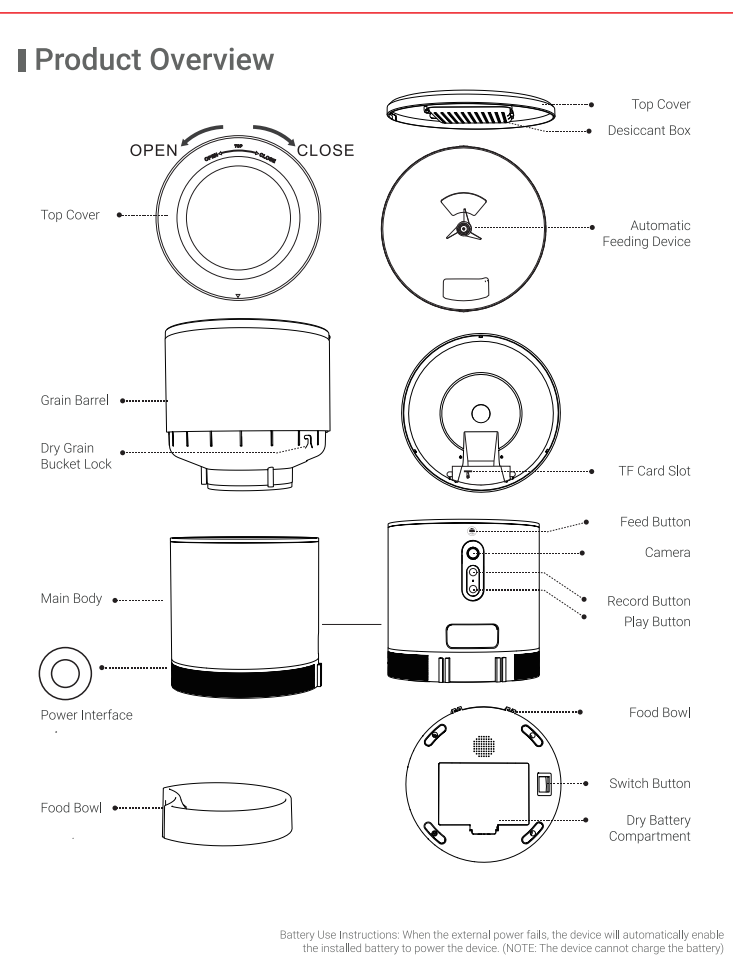
Please read this manual carefully before use to ensure safe use of the smart automatic pet feeder.

Product Introduction	2
Operation Guide	3-8
First Time Use	3
Function Description	3
Bind Smart Life App	3-6
Video Version Feeder (interface introduction)	7
WiFi Version Feeder (interface introduction)	8
Cleaning/Maintenance	9
Precautions	10
Common Problem	11

Feeder (subject to the actual product)

List of accessories (subject to the actual product)

adapterX1	cableX1	manualX1	Desiccant X1
-----------	---------	----------	--------------



### Operation Guide

#### 1. The First Use

- Open the top cover of the feeder and remove the power cord adapter from the bucket.
- Plug the power cord into the power connector on the rear of the main unit and connect the adapter to power.
- Place the main unit in a horizontal position and the food bowl should be installed at the corresponding position of the main unit.
- Add pet(s) dry food to the feeder bucket.
- The desiccant is placed in the desiccant box by default. Please replace it regularly for long-term use. (DO NOT USE CLEANING)
- The battery compartment can be installed with 3 sections of No. 1 battery for manual feeding when there is no electricity (optional).
- Bind the feeder to the Smart Life App to set up the feeding plan of the pet.

#### 2. The Function Description

**Feed Button:** Short press to eat one; Long press for 5 seconds to restore the factory settings.

**Record Button:** Press and Hold the "Record Button" to record the sound to remind the pet to eat before feeding time.

**Play Button:** Plays the recorded sound.

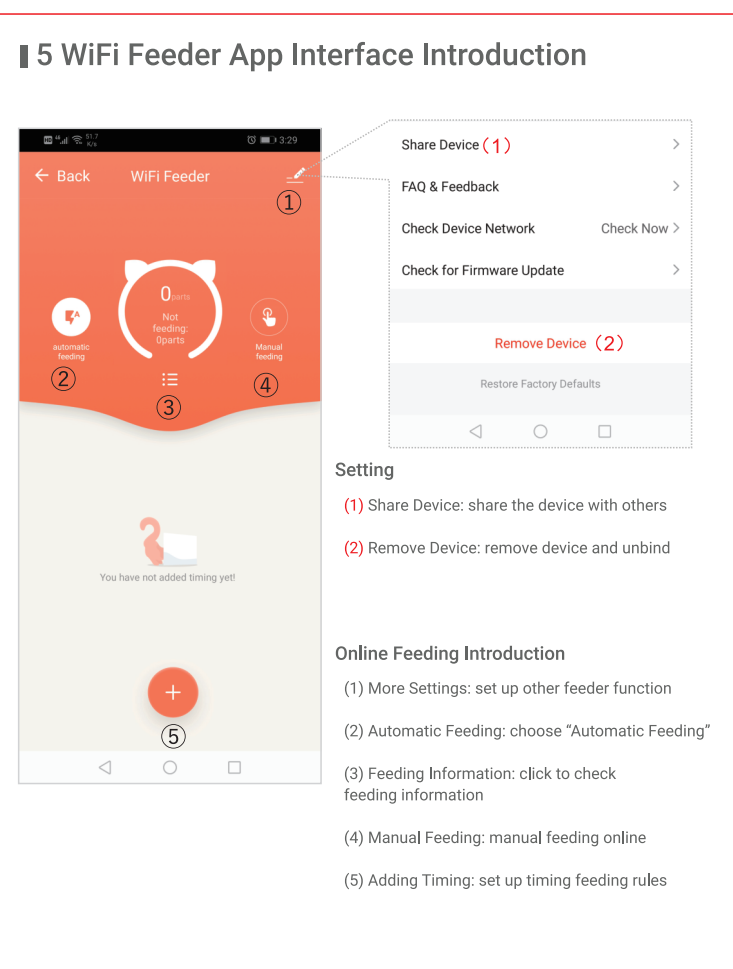
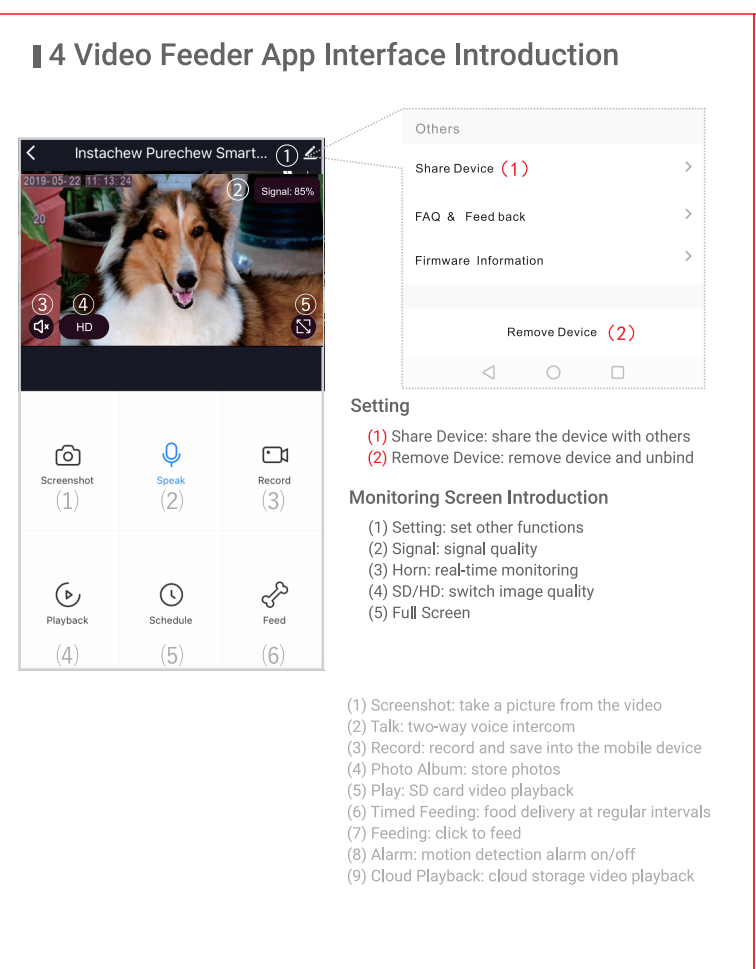
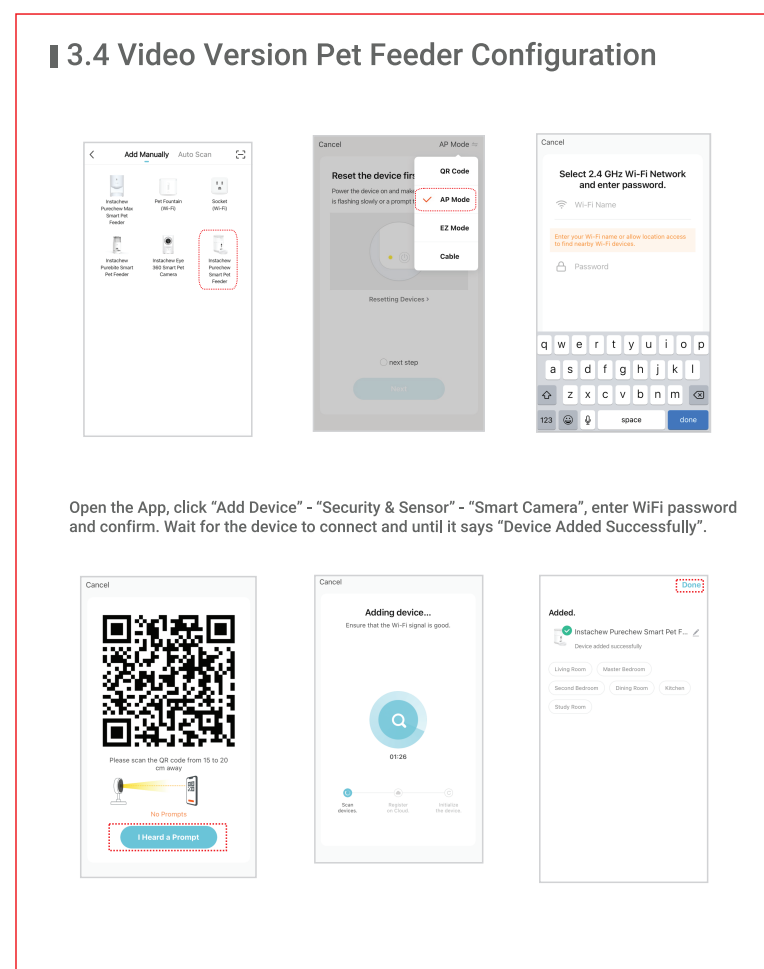
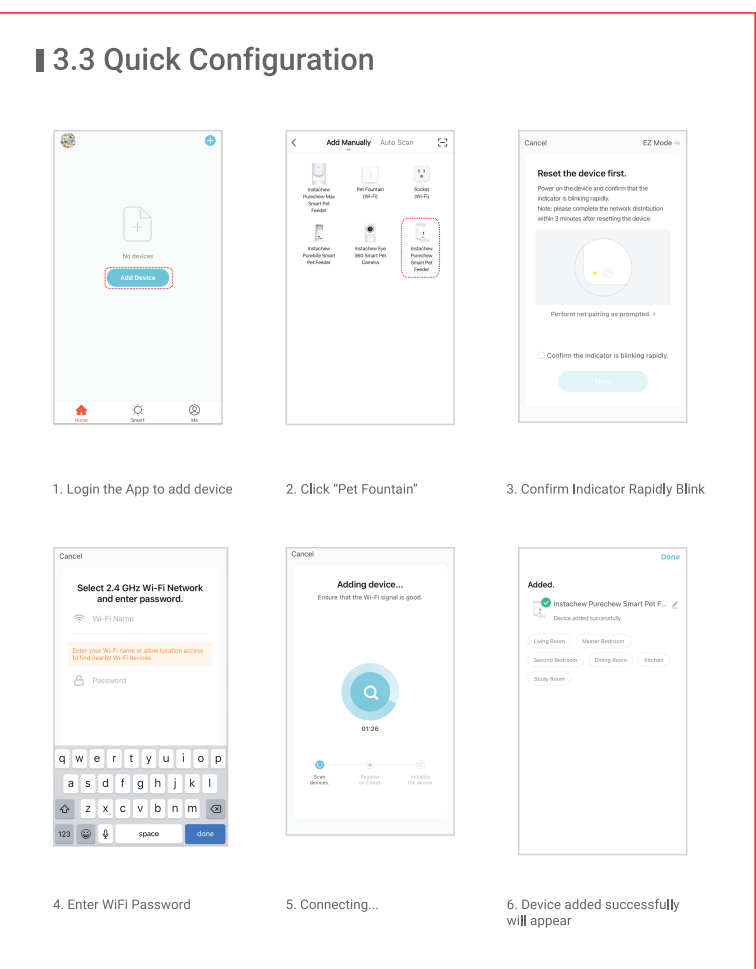
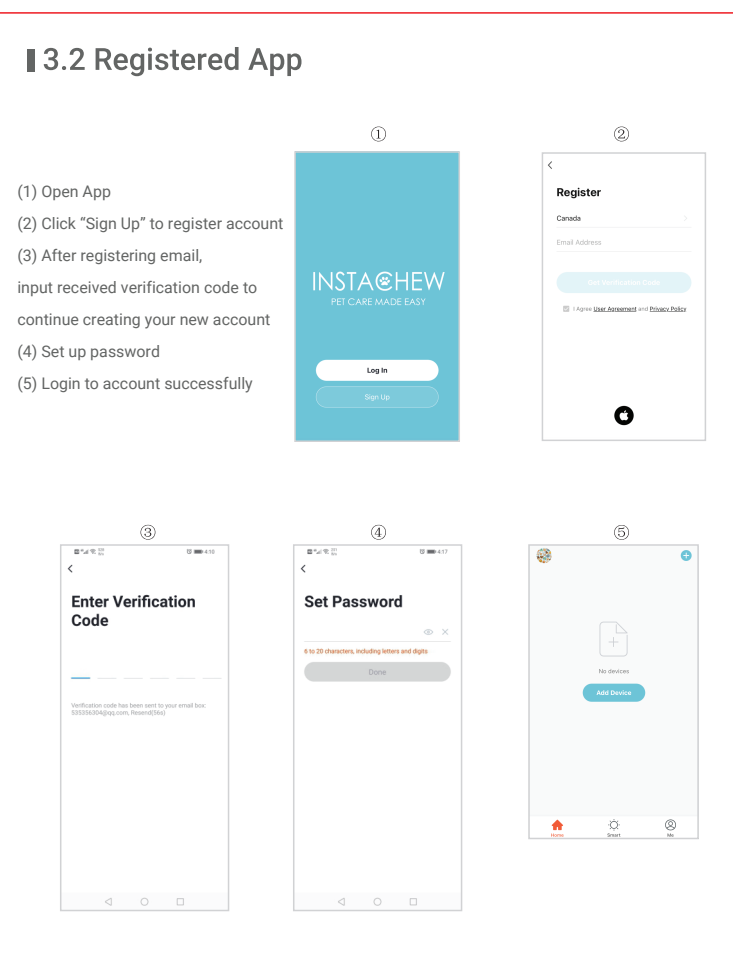
**Rocker Switch:** Feeder switch.

**Dry Battery Compartment:** Three 1st batteries can be installed for power supply.

#### 3. Binding Feeder to Smart Life App

##### 3.1 App Download and Installation

Scan the QR code below to download the Smart Life App and complete the installation.



### Cleaning/Maintenance

After the feeder has been used for a period of time, the bowl and the bucket should be cleaned with a cleaning agent to avoid the occurrence of bacteria that affect the health of the pet due to the food residue being left uncleaned for a long period of time.

- The machine parts displayed above can be removed from the main feeder and cleaned with detergent and water.
- Open the desiccant box in the top cover.
- The Grain barrel disassembles by turning the Grain Drum separation switch.
- Pull up to remove the food bowl.
- After cleaning, it must be dried or air-dried before being assembled into a whole main feeder for use.

This feeder is suitable for dry foods smaller than 12mm. Freeze-dried food is not available. Please keep the environment dry.

### General Advice for this Pet Feeder

#### Attention

- Please place the device correctly, prevent the pet from tipping over the device. This device is only suitable for small and medium pets under 20kg.
- Please replace the desiccant in the storage lid regularly. No desiccant is needed.
- Please keep the food bucket dry and sealed, and check regularly to ensure food residue precautions.
- Do not drop any substances, other than pet dry food into the grain bin. Otherwise, the device may function irregularly or possibly cause safety risks for the pet.
- To prevent the pet from tipping the product over, it is recommended to place the product in the corner or against a wall.
- The product anti-battering line should be installed as concealed as possible to prevent the equipment from being damaged by the pet biting or chewing the wire.
- If children are using this device, be sure to use it under adult guidance.
- After installing the spare dry battery, you can manually operate the device to provide normal power supply during power failure.
- Regularly clean the food bucket and food bowl.
- This device is not recommended for young pets within three months.

Maintenance Records:	.....
Maintenance Time:	.....
Fault Conditions:	.....
Fault Cause:	.....
Trouble Shooting:	.....
Return and Exchange Proof:	.....
Date of Validity:	.....
Original Device ID:	.....
New Device ID:	.....
Maintenance Personnel Signature:	.....
Maintenance Department Seal:	.....

### FAQ

**Q. The feeder is not connected, what is the problem, how can I fix this?**

A. (1) Check if the machine is normal. Check the status of the device indicator. After the power is turned on, the blue light indicator flashes. When the network is connected, it will be on. There will be a drop tone before the network is configured.

(2) Check if the WiFi username and password are normal. WiFi username and password cannot have special characters. It is recommended to use English letters + numerical signs.

(3) Uninstall the software and reinstall the software. Please authorize the App to obtain the location information and access the network permissions during the installation process. Follow the above steps and enter the correct WiFi password.

**Q. When connection the feeder, sometimes it can be connected normally, and sometimes I have trouble connecting, how do I deal with it?**

A. Check if the machine's food outlet is blocked. At this time, the light indicator is always on.

**Q. Why does the feeding time differ by tens of seconds from the current time?**

A. The parameters set on the App will have an error of about 30 seconds, depending on the timing of the network environment.

**Q. How do I quickly reconnect after the machine is disconnected?**

A. (1) Exit the App and re-enter, wait for the data to update.

(2) Switches from the feeding interface to the video interface and waits for the video to refresh.

**Q. SD card support capacity.**

A. Able to support 8GB to 64GB memory SD cards.

**Q. Feeder requirements for network type.**

A. The feeder must use a WiFi signal that satisfies the WiFi 802.11bgn protocol.

If you still have difficulties, please contact customer service.